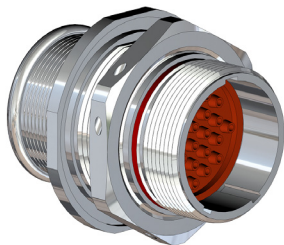
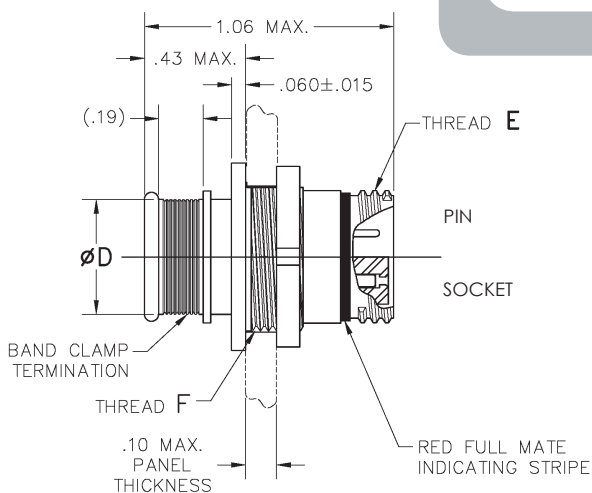


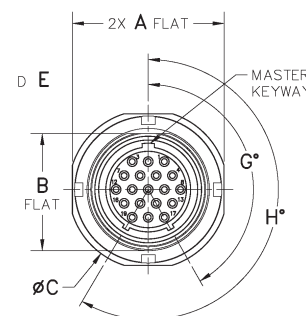
## H2DA2\* - 231 241



The HiRel H2DA2\*-231 & 241 High Density Jam Nut or Spanner Nut Receptacle is equipped with a double start ACME thread and a rear clamp band accessory. This H2D receptacle is available in shell sizes 5-21 with any of our standard insert arrangements as well as custom configurations.



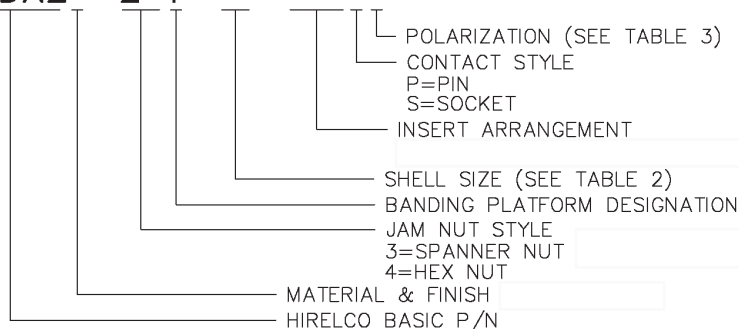
POSITION	G°	H°
A (NORMAL)	150°	210°
B (ALTERNATE)	75°	210°
C (ALTERNATE)	95°	230°
D (ALTERNATE)	140°	275°
E (ALTERNATE)	75°	275°
F (ALTERNATE)	95°	210°



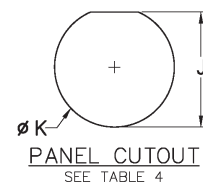
SHELL SIZE	A ±.015	B ±.010	ØC ±.015	ØD ±.015	THREAD E	THREAD F
5	.545	.350	.575	.257	.3125-.05P-.1L-2A	.3750-28UN-2A
6	.595	.410	.635	.309	.3750-.05P-.1L-2A	.4375-28UN-2A
7	.723	.536	.755	.394	.4375-.05P-.1L-2A	.5625-32UN-2A
8	.723	.536	.755	.429	.5000-.05P-.1L-2A	.5625-32UN-2A
9	.790	.596	.830	.491	.5625-.05P-.1L-2A	.6250-28UN-2A
10	.855	.658	.890	.564	.6250-.05P-.1L-2A	.6875-28UN-2A
13	1.044	.845	1.078	.651	.8125-.1P-.2L-2A	.8750-28UN-2A
16	1.230	1.022	1.264	.814	1.0000-.1P-.2L-2A	1.0625-20UN-2A
17	1.290	1.096	1.325	.868	1.0620-.1P-.2L-2A	1.1250-28UN-2A
21	1.577	1.345	1.625	1.116	1.3125-.1P-.2L-2A	1.3750-28UN-2A

Operating Temperature	-65°C to +175°C*
Random Vibration	37g
Shock	300G, half-sine, 3ms, 3 axes
Gunfire Vibration	37g

### H2DA2\*-2\*1-\*\*-\*\*\*\*\*



SHELL SIZE	J ±.002	ØK ±.015
5	.356	.385
6	.416	.447
7	.542	.572
8	.542	.572
9	.602	.635
10	.666	.697
13	.851	.885
16	1.028	1.075
17	1.102	1.135
21	1.354	1.385

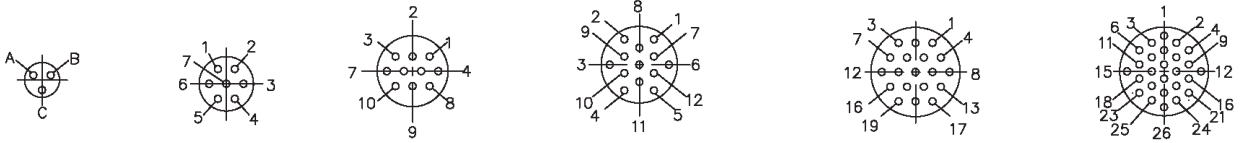


\* See "Classes/Finishes" table for exceptions

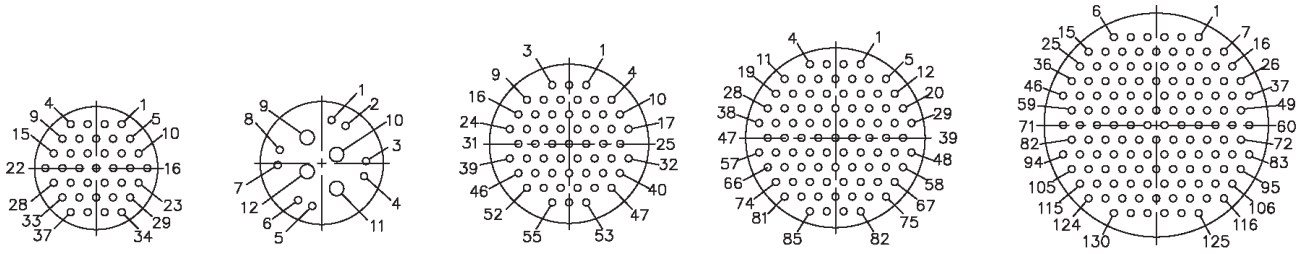
H2DA2\*-231/241

## INSERT ARRANGEMENTS

Front face of pin insert engagement side shown. Socket insert is mirror image of pictured.



Insert Arrangement	05-003	06-007	07-010	08-013	09-019	10-026
No. of Contacts	3	7	10	13	19	26
Contact Size	#23	#23	#23	#23	#23	#23
DWV Voltage (VAC)	500	500	500	500	500	500
Current Rating (Amps)	5	5	5	5	5	5



Insert Arrangement	13-037	13-048	16-055	17-085	21-130
No. of Contacts	37	4	8	55	130
Contact Size	#23	#16	#23	#23	#23
DWV Voltage (VAC)	500	1800	500	500	500
Current Rating (Amps)	5	13	5	5	5

## CONTACTS



Contact Pin:

Contact Socket:

Size 23

Size 23

0009-047-000 (22-24 AWG Wire)	0012-049-000 (22-24 AWG Wire)
0009-114-000 (26-28 AWG Wire)	0012-287-000 (26-28 AWG Wire)

## CLASSES/FINISHES

Class	Material	Finish
C	Al	Anodize Black**
F	Al	Low Stress Nickel**
W	Al	Olive Drab Cadmium over Nickel
T	Al	Nickel Teflon
Z	Al	Zinc Nickel
B	Ti	Nickel**
K	Cres	Passivated**

For Space Grade Applications, add a "1" after the Class.  
Ex: Space Grade Titanium with Nickel plating = B1

\*\* Operating Temperature -65°C to +200°C

## TOOLS



Crimp Tool:

Daniels P/N AFM-8  
(M22520/2-01)



Positioner:

Daniels P/N K-710A (Socket)  
Daniels P/N K-709A (Pin)



Insertion / Extraction Tool:

P/N 08AT024-23 (Size 23)

For hermetic connectors, alternate insert arrangements or connectors with size #16 contacts, please consult factory for more information.